

PRESERVATION
FOUNDATION
OF PALM BEACH

Knowledge. Stewardship. Culture.

FOUNDATION
FALL 2022
www.palmbeachpreservation.org
561.832.0731

NEWS

CASA MANANA
Designed by Maurice Fatio



Letter from the President & CEO

Dear Friends of the Preservation Foundation,

This past summer was the busiest that I have experienced over the ten years that I have been at the Foundation. In addition to planning for the season ahead, we have dedicated much of our time to making our vision for Phipps Ocean Park a reality. Running a successful capital campaign and coordinating the design and approvals for the 18-acre site has been no small feat. The talent of the Foundation's staff has shone throughout the process and I couldn't be prouder of everything we have accomplished. In the next few months, we will launch the public phase of our campaign. We are looking forward to sharing the project's innovative design and collaborative partnerships, and inviting you to join us in this exciting endeavor.

Each season we seek to distill the aspects of Palm Beach that set it apart from other communities through our programming. As the area grows, our efforts to foster a greater understanding of our built environment are more important than ever. Our first panel discussion in November explores the influential role of the Town's design review boards in protecting town character, as seen through the eyes of our local leaders. Opening in December, our *Palm Beach Moderne* exhibition links the often-underappreciated architectural style to its European precedents and provides inspiration for contemporary architecture that compliments the Town's architectural heritage.

This is an exciting time for the future of the Preservation Foundation as we meaningfully expand our presence in the town and the impact of our mission. We look forward to engaging with audiences both new and familiar as we embark on a new season.

Kind regards,

Amanda H. Skier



Image by Capehart.



Town Councilman Ted Cooney. Image by Capehart.



Architectural Commission Chair Jeff Smith.



Landmarks Preservation Commission Chair Sue Patterson.

My Palm Beach Reception & Panel

Ever wonder what makes Palm Beach special? To open the season, the Preservation Foundation is highlighting the process that keeps Palm Beach beautiful. By bringing together a panel of local officials, Foundation members will develop a greater understanding of the Town's character and history. Town Councilman Ted Cooney, Architectural Commission Chair Jeff Smith, and Landmarks Preservation Commission Chair Sue Patterson will discuss how review boards work to protect the charm of Palm Beach.

Since the 1920s with the creation of the Art Jury, the Town of Palm Beach has had some form of design review. By the 1970s design review had formalized to create two boards: ARCOM and Landmarks. ARCOM seeks to preserve various elements of urban beauty and requires that new projects enhance the existing elements. Whereas Landmarks seeks the protection, enhancement and perpetuation of such properties that represent or reflect elements of the town's cultural, social, economic, political and architectural history.

Join us on November 17th at 5:30 pm for cocktails and 6:00 pm for the panel discussion.

Summer Internships and Scholarship Recipient

During the summer of 2022 the Preservation Foundation's Anthony K. Baker interns and Sallie B. Phillips archival intern collaborated on a research project about the history of landscape design in Palm Beach. The two Baker interns were: Isa Lewis, a student at the University of Washington in the Bachelor of Landscape Architecture program, and Anthony Mendez, a graduate student in Tulane University's School of Architecture Preservation Studies program. Joanna Luchese, a rising sophomore at Bard College, studying Historical Studies and Literature served as the Phillips intern. Each intern brought their background in landscape architecture, historic preservation, and history to the project.

The team studied landscape design history in Palm Beach from the Pioneer Era through the Mid-Century. For each era, a selection of projects was presented to illustrate the design trends. The interns utilized drawings in the Foundation's archival collections as well as materials from other local institutions. They also sought to analyze the prevalence of native plants throughout the history of the island by reviewing landscape architecture plans and historic photographs.

In their conclusion, the team stated, "In working on this report, we discovered that Palm Beach residents have been using non-native plants to cultivate the Town into a tropical paradise for more than a hundred years. However, we also found that they have been leaving existing growth untouched or intentionally incorporating it into landscape designs for just as long. Many historic residences, including the ones featured in this report, seem to have met or even exceeded the current 35% native benchmark long before it was put in place."



Joanna Luchese, Anthony Mendez, and Isa Lewis.



Jerry A. Tishman Scholarship recipient Aaron Stant.



COCOANUT TREE

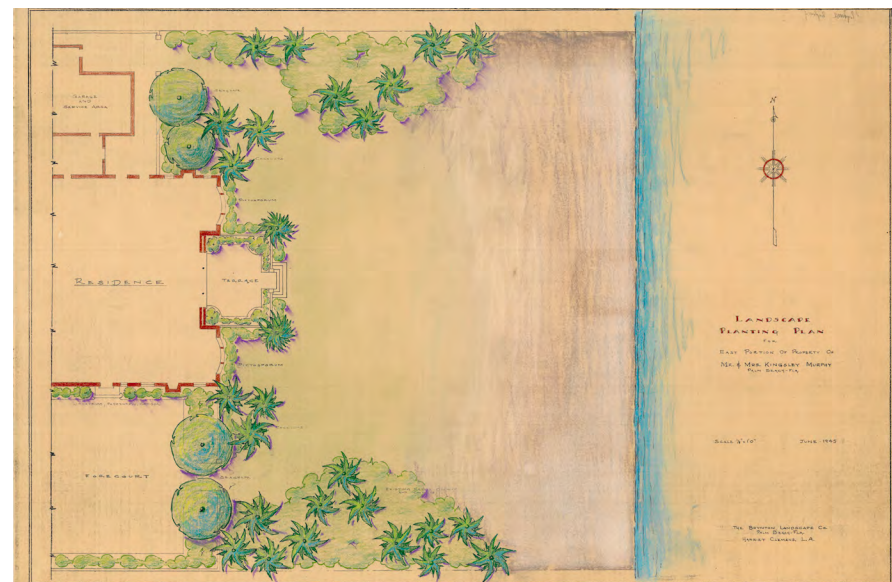


PALMETTO PROMENADE FROM HOTEL ROYAL POINCIANA TO THE BREAKERS



AN AVENUE TO SEA

Phototypes of early scenic vistas.



Landscape Plan for an Ocean Estate by the Boynton Landscape Company.

This was the first time both internship programs embarked on a collaborative research project that provided invaluable scholarship. The team presented their findings to Town Council and to a group of mentors and colleagues at the end of the internship.

An abbreviated version of the report was adapted into an online exhibition and can be viewed here:

<https://preservationfoundationofpalmbeach.omeka.net/exhibits/show/landscape-history/intro>

The Jerry A. Tishman Scholarship was awarded to Mr. Aaron Stant, who is a recent graduate of Ohio State University where he earned his Bachelor of Science in Architecture and is now a rising graduate student at the University of Michigan where he will pursue a Master of Architecture. Mr. Stant is interested in exploring the juxtaposition between preservation and ADA accessibility, stating that, "Accessibility does not have to be sacrificed in preservation. Designers can explore ways to unite the richness of the original spirit of the building in ways that all people can experience and access."

Palm Beach Moderne

The 2022-2023 Exhibition at Foundation Headquarters will focus on Palm Beach Moderne. Open and complimentary to the public, the exhibition will be on view from Tuesday, December 13th to Friday, May 5th.

Art Moderne, a French term also known as Streamline Moderne, is a form of Art Deco that grew out of the Modern movement in the 1930s. It drew influence from the streamlined aerodynamic shapes of planes, cars, and ships, and it emphasized simple geometric forms, smooth surface finishes, and horizontal lines. *Palm Beach Moderne* examines the island's Moderne residences, many of which are situated on the water, where their nautical white forms set them apart from the more common Mediterranean Revival estates.

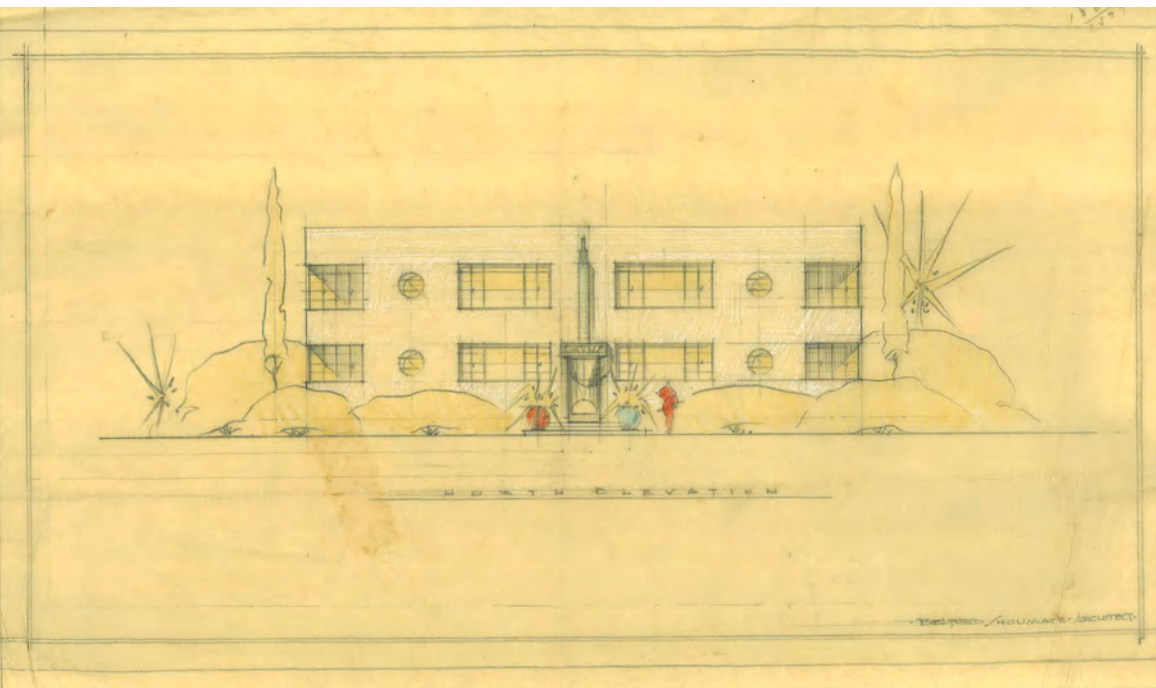
Palm Beach architects Maurice Fatio, Belford Shoumate, and John Volk brought Moderne—which first became popular in Europe—to the region during the 1930s. The architects were connected to Europe by birth or education, or in the case of Shoumate, directly influenced by Joseph Urban, whose contributions will also be on display.



Interior of Manana House designed by Maurice Fatio.



Interior of Moffet House designed by John Volk.



A pastel sketch by Belford Shoumate.



Set Design by Joseph Urban, courtesy Columbia University.

They all arrived in Palm Beach at an opportune time that coincided with commissions that allowed them to build what previously could only be imagined. Clients from a variety of backgrounds: art, aeronautical engineering, and even federal administration put their faith in the architects to visualize their Moderne dream homes.

Palm Beach Moderne seeks to place the island within the greater context of world events and movements during the 1930s. Industrial design, film, interior design, and the work presented at the World's Fairs of the era all influenced the buildings represented in the exhibition. The exhibit highlights work in the Foundation's collection, and a selection of Belford Shoumate's distinctive pastel drawings will be on view in addition to black and white photography of iconic Moderne projects.

An opening reception celebrating the exhibition will be on Thursday, December 15th at 5:30pm.

Polly Jessup Design Series

The Polly Jessup Design Series is in its final year. The Polly Jessup Design series was created in 2017 in honor of local interior designer, Polly Jessup (1899-1988). The five-year program concludes on December 7th with a lecture by Amanda Lindroth. Growing up in Palm Beach in the 1970s, Amanda experienced Florida at its most magical. The style, the architecture, the climate—it would all imprint on her, taking root and blossoming throughout the years. Throughout her work, she kept the focus on breezy sophistication and vibrant layers of texture and color—the hallmarks of inviting spaces to host family and friends.

In continuing to honor Polly Jessup's legacy, the Foundation is proud to announce a new series of publications that celebrate the untold stories of women designers in Palm Beach. The series will feature a range of interior designers, landscape architects, architects, and artists. The new book on Ms. Jessup is slated for publication in Spring 2023. Jessup is known for her graceful and sophisticated interior décor for society's biggest names—Du Pont, Ford, Whitney, Mellon, Reed, and countless other socialites. For the first time, Jessup's history and contributions to the design canon will be documented.



2022 Polly Jessup Design Lecturer Amanda Lindroth.



Author Maggie Lidz.



Polly Jessup, (left) in Europe, circa 1935.



A Jessup Interior at a home in Hobe Sound.

Curatorial historian Maggie Lidz is the author of the book. Lidz graduated from Columbia University with a Bachelor of Arts in History and from the University of Delaware with a Masters of Art in Art History. Her master's thesis was on the architectural development of Winterthur, the Du Pont family's house. She has published numerous articles in magazines including *The Magazine Antique*, *Antiques and Fine Art*, and *Southern Living*. Her books include *Life at Winterthur a Du Pont Family Album*, *The Du Pont's: Houses and Gardens on the Brandywine* and *The Du Ponts of Winterthur*. She co-curated the 2015 Winterthur exhibit, *Tiffany: The Color of Luxury* and Winterthur's most successful exhibition in the institution's sixty-year history, *The Costumes of Downton Abbey* (2013-2014).

Lidz also worked as a research consultant to the Edsel & Eleanor Ford House in Grosse Pointe, Michigan, where she first learned of Jessup, Inc. In 2017, she published an article, "The Decorator Time Almost Forgot," in *Architectural Digest* about the staff-curated exhibition at the Preservation Foundation of Palm Beach on Polly Jessup.

The Polly Jessup Design Series and new publications are generously underwritten by the Daniel Family.

New Special Events Associate

Dawn Miller has recently joined the Preservation Foundation of Palm Beach as the Special Events Associate under Director of Advancement Lauren Clyman. Dawn's previous experience includes corporate event planning, as well as several years with the City of West Palm Beach in Community Events. In her previous role, Dawn assisted event organizers with permitting and event logistics when utilizing the West Palm Beach waterfront.

While with the City, Dawn managed a private event venue, Lake Pavilion, that hosts many private evening events and several government meetings. She also served as the lead on community-based events such as the West Palm Beach Green Market, Fourth on Flagler, and Holiday in Paradise. Dawn was then promoted as City liaison to the Palm Beach International Boat Show, Palm Beach Modern + Contemporary, and SunFest.

Dawn is thrilled to be coming onboard to manage all of the Foundation's special and private events. She will be focusing on the continued growth of Pan's Garden and Earl E. T. Smith Preservation Park as event spaces, while coordinating with the team on upcoming events. She is gearing up for another busy season, as the Foundation expands its vision to new and exciting prospects.

Dawn attended Florida International University and holds a Bachelor of Science in Hospitality Management. She continued her education in wine and spirits through the Court of Master Sommeliers with an introductory sommelier certification. Learning the history behind wine and winemaking has always been one of her interests. She is excited to expand her knowledge at the Preservation Foundation, as it pertains to the historical architecture of Palm Beach. After graduation, Dawn settled in Palm Beach County in a cozy 1950's bungalow in Lake Worth Beach with her spouse and loves long evening walks through the eclectic neighborhoods nearby.



Dawn Miller.



The new law applies to the recently landmarked home on Crescent Drive.



President & CEO Amanda Skier participating in a public meeting.

Preservation Advocacy

Our trusted voice influences project approvals and policy decisions through a constant presence at Town meetings and strong relationships with local officials and Town staff. For every meeting of the Landmarks Preservation Commission, we provide expert, research-driven evaluations that commissioners rely upon to make their decisions. We support property owners and their architects through free access to our archives and professional advice that promotes positive preservation outcomes for each project.

Preservation Foundation staff learned of House Bill 423, which became law on July 1, 2022, after the bill had already passed the House and Senate. Unfortunately, we learned of this bill too late to have any impact on its language or to prevent its passage. This new law threatens many potential historic resources throughout the state, including within the Town of Palm Beach, by restricting municipalities' abilities to prevent demolition of single-family residential structures under certain circumstances. The Town's latest historic property survey (updated and completed in December 2020) listed almost 1000 structures that are not currently designated but that may be eligible to become Landmarks.

At the September 14, 2022, Town Council meeting, the council discussed House Bill 423 and two documents that the Foundation provided. The first was a draft resolution prepared by Town staff, based on a similar resolution adopted by the City of Coral Gables, which the Foundation received and shared with Town staff. The second was a draft letter, prepared by the Foundation, that the Council encouraged residents to send to our representatives to express their dissatisfaction with the regulations imposed by House Bill 423.

The letter and list of state elected officials is available on our website at www.palmbeachpreservation.org/advocacy. We encourage you to make your voice heard!

CALENDAR OF EVENTS

All events located at 311 Peruvian Avenue unless otherwise noted.
Space is limited for all events. Reservations are required.

All events are subject to change and exhibition dates may vary based on hours and holidays.

NOVEMBER 2022

Thursday, November 17,
5:30pm
Lecture & Cocktail Reception
My Palm Beach: A Panel featuring Ted Cooney, Jeff Smith, and Sue Patterson
Members Only

Saturday, November 19
10:30am to 3:45pm
Art Class
Plein Air Watercolor Journaling with Hillary Parker
Details on website

Monday, November 28,
6:30pm
Revealing Nature with Todd Forrest, VP of Horticulture and Living Collections at NYBG, and Raymond Jungles, FASLA
Club Colette
By Invitation

DECEMBER 2022

Wednesday, December 7,
5:30pm
Lecture & Cocktail Reception
Polly Jessup Design Series featuring Amanda Lindroth
Members Only

Saturday, December 10
10:30am to 3:45pm
Art Class
Plein Air Watercolor Journaling with Hillary Parker
Details on website

December 13 to May 5 |
Weekdays 10am to 4pm
Exhibition
Palm Beach Moderne
Open and Complimentary to the Public

Thursday, December 15,
5:30pm
Cocktail Reception
Opening Evening for Palm Beach Moderne
Members Only

JANUARY 2023

Saturdays, January 14, 21, & 28
10:30am to 3:45pm
Art Class

The Basics of Botanical Drawing & Watercolors with Hillary Parker
Details on website
Wednesday, January 18,
5:30pm
Lecture/Book Signing
Objects of Desire by Maria Hummer-Tuttle
Members Only

Monday, January 23, 2pm
Garden Class
Braiding Sweetgrass by Robin Wall Kimmerer
Virtual
Open and Complimentary to the Public

Wednesday, January 25,
2pm
Lecture/Book Signing
Cathy B. Graham: Full Bloom with Cathy Graham
Members Only

Wednesday, January 25,
7pm
Preservationist Dinner featuring Cathy Graham
By Invitation

FEBRUARY 2023

Saturdays, February 4, 11, & 25, 10:30am to 3:45pm
Art Class
Intermediate Level Botanical Drawing & Watercolors with Hillary Parker
Details on website

Wednesday, February 22,
2pm
Lecture/Book Signing
The Houses and Collections of Marjorie Merriweather Post: The Joy of It by Dr. Wilfried Zeisler
Members Only

MARCH 2023

Friday, March 3
Annual Dinner Dance
By Invitation